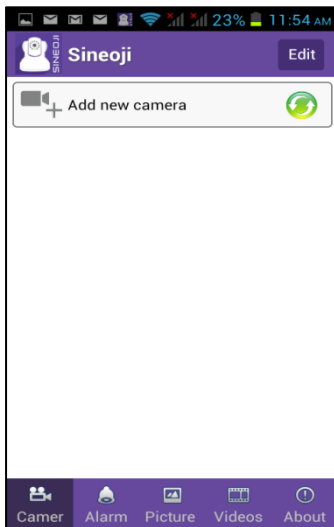


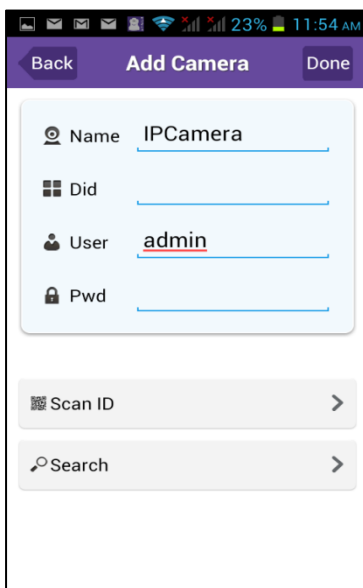
SINEOJI

Setting up Sineoji IP Cam with Wireless Connectivity

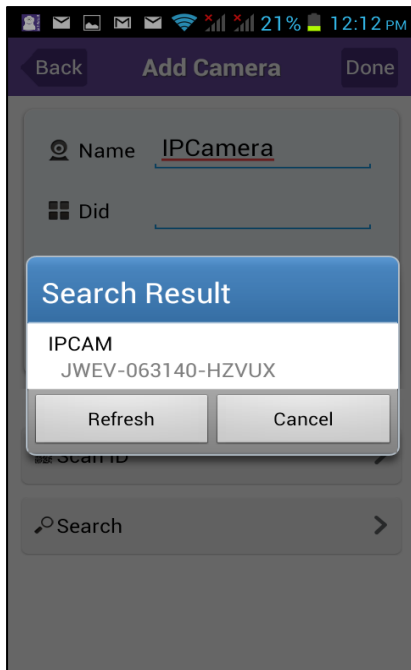
1. Connect one end of the Ethernet cable to the Ethernet port of your router and the other end to the Ethernet port of your IP Camera.
2. Enable the Wireless on your Smartphone (Android/iPhone) and connect to your designated wireless network (home/office).
3. Open up the Sineoji Mobile App on your Smart Phone and select “Add Cameras”.



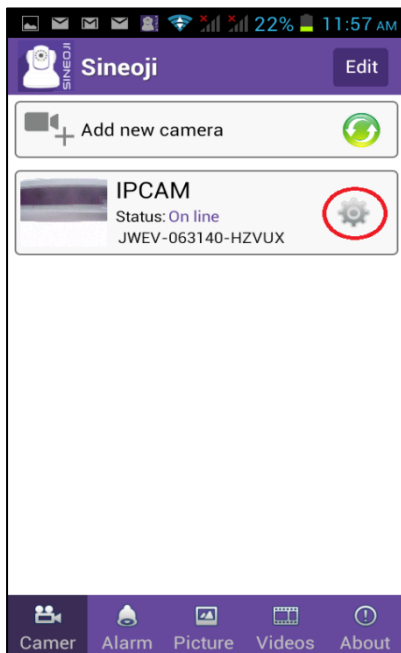
4. Select the “Search” Button.



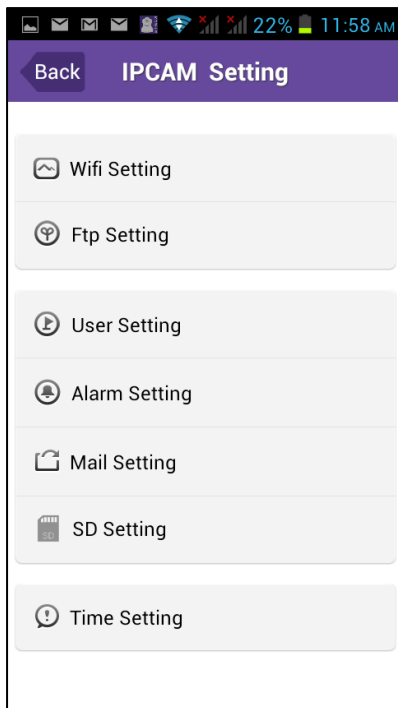
5. Upon searching, the designated IP Cam will be shown as follows :



6. Select the IP Cam and click "DONE".
7. The IP Camera has been successfully setup via wired connectivity.
8. To enable wireless connectivity, select the "Settings" icon highlighted in RED as shown below.

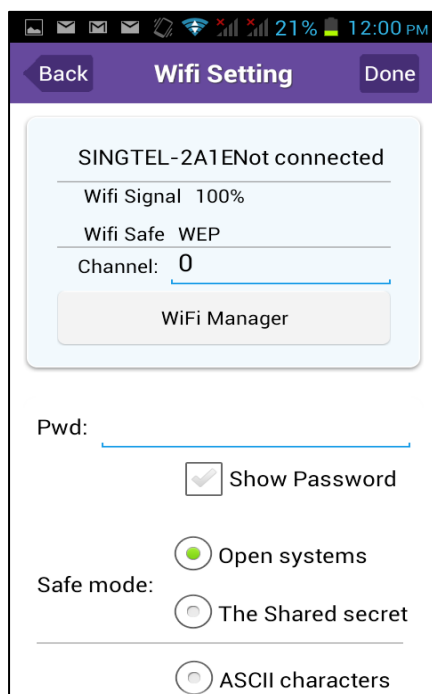


9. This will bring you to a menu where you will be required to select the “WiFi setting”.



10. Click on “WiFi Manager”, it will display a list of wireless network within your surroundings.

11. Select your network and enter the password of your network.



12. Click “Done” when you have entered the password of your network.

13. At this stage, the camera starts moving as it is beginning to reboot and initialize.
14. When the camera is stationery, you may remove the Ethernet cable from the camera and the router.
15. Your camera is successfully connected via wireless.