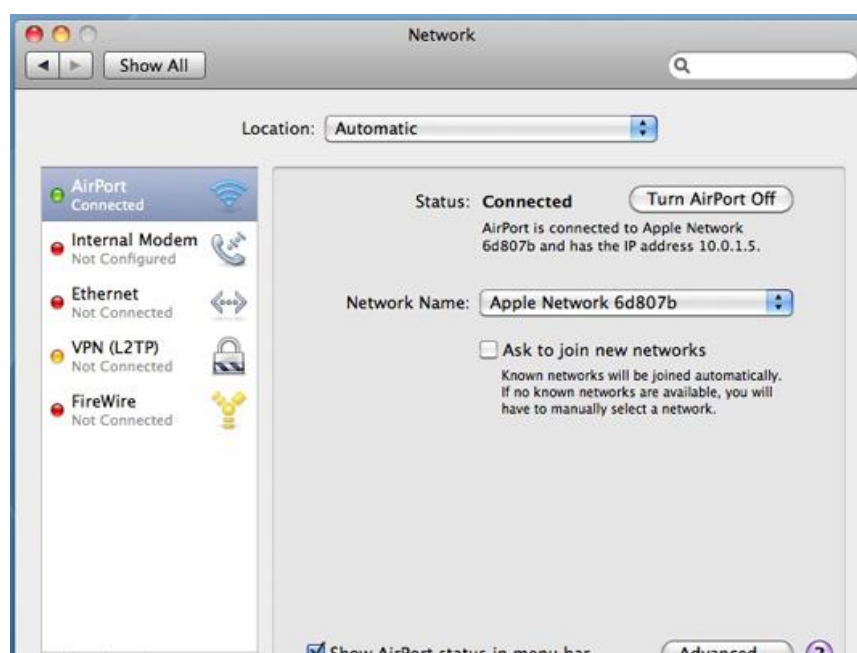


Changing Password on Sineoji PL500EW 500Mbps 2-Port HomePlug AV Wireless Range Extender for a Mac Platform

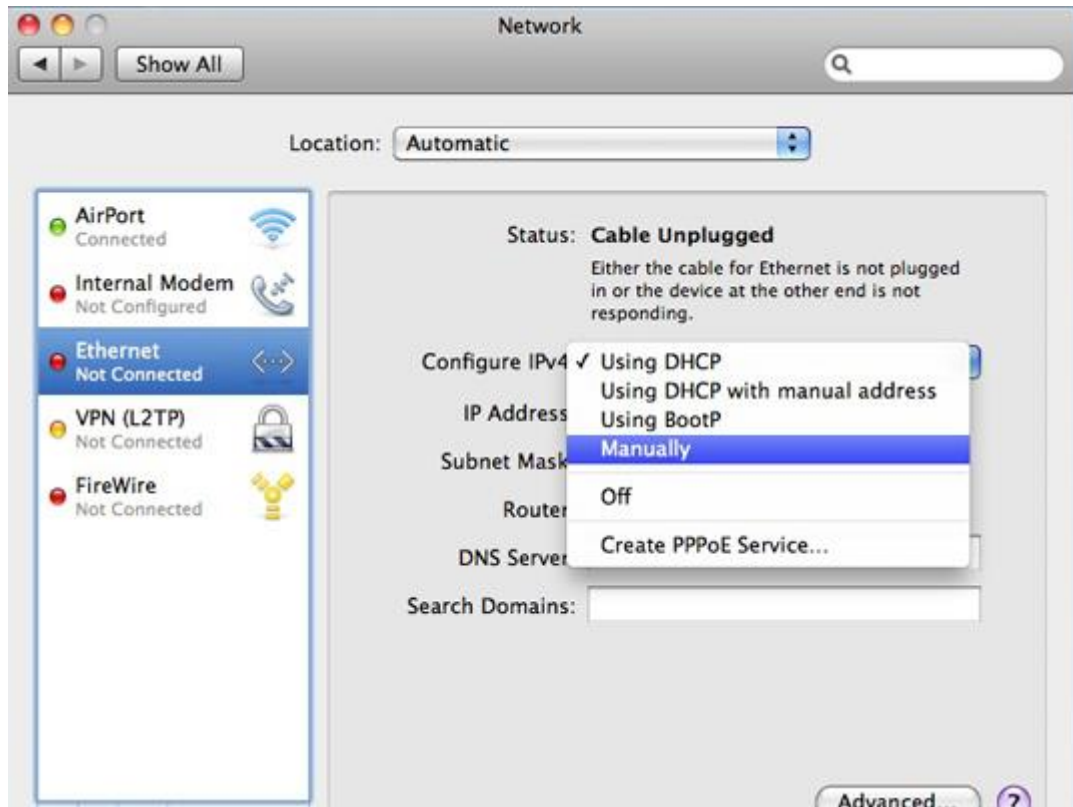
1. Before starting, ensure the other HomePlug that is connected to your router is turned off.
2. Power on Sineoji PL500EW connected a LAN cable to the Ethernet port of the PL500EW and the other end to your Mac.
3. On your Mac, open System Preference.



4. From the System Preference menu, select Network



5. Click on the configure IPv4 pop up menu and choose manually.



6. Enter the IP address, 192.168.33.100 in the IP address Box.
7. Enter the subnet mask, 255.255.255.0 in the Subnet Mask Address Box



8. Click the APPLY button.
9. Proceed to your web browser and enter 192.168.33.1
10. Go to "Wireless Basic"
11. Proceed to "Change Passphrase" and enter your new password.
12. Click Apply and logout when you have changed your password.
13. Repeat STEP 3 to STEP 5 but with Configure IPv4 to "USING DHCP".
14. Click APPLY when you have changed the above IPv4 to "USING DHCP"
15. You have successfully changed your password.